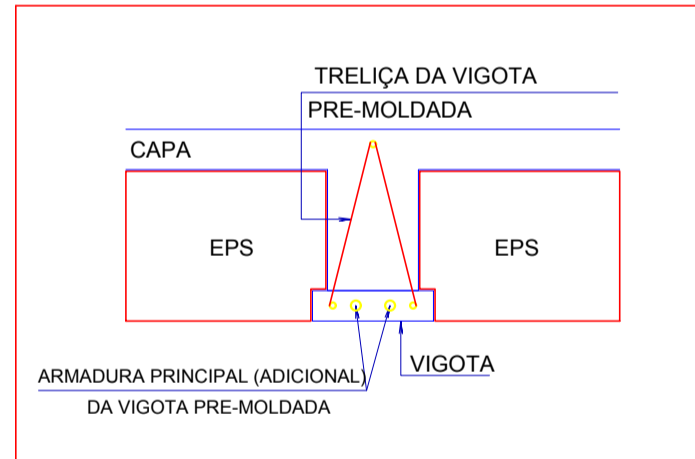


ESQUEMA DA VIGOTA PRÉ-MOLDADA

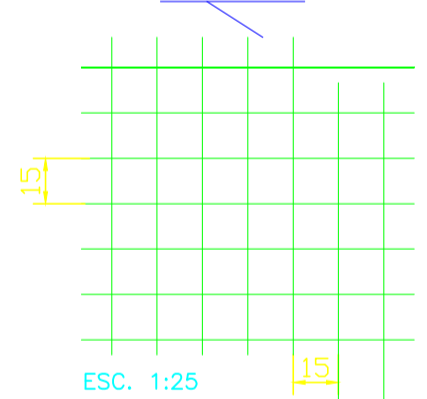


RELAÇÃO DAS TRELIÇAS E ARMAÇÃO PRINCIPAL

LAJE	TRELIÇA	PI VIGOTAS
B12	TR 08644	1x8.00

DET. TELA SOLDADA (DISTRIBUIÇÃO SUPERIOR LAJE)

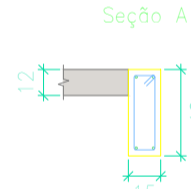
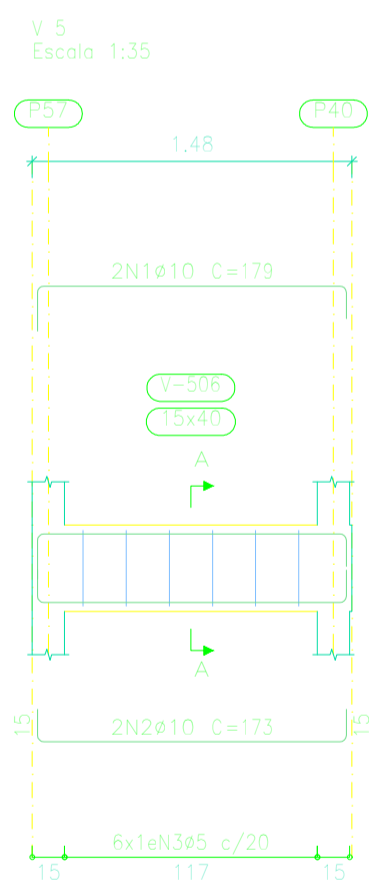
TELA SOLDADA - VER ESPECIFICAÇÃO



ESC. 1:25

ESPECIFICAÇÃO DAS TELAS

LAJES	DESIGNAÇÃO	BITOLA(mm)		ESPAÇAMENTO(CM)		PESO(kg/m²)
		LONG.	TRANSV.	LONG.	TRANSV.	
B12	Q138	5,0	5,0	15	15	2,20

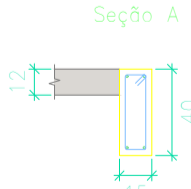
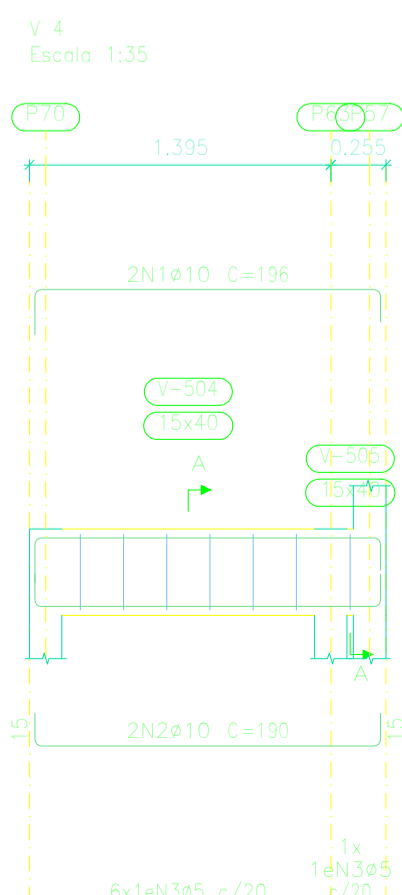
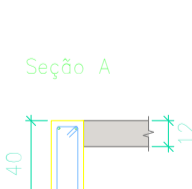
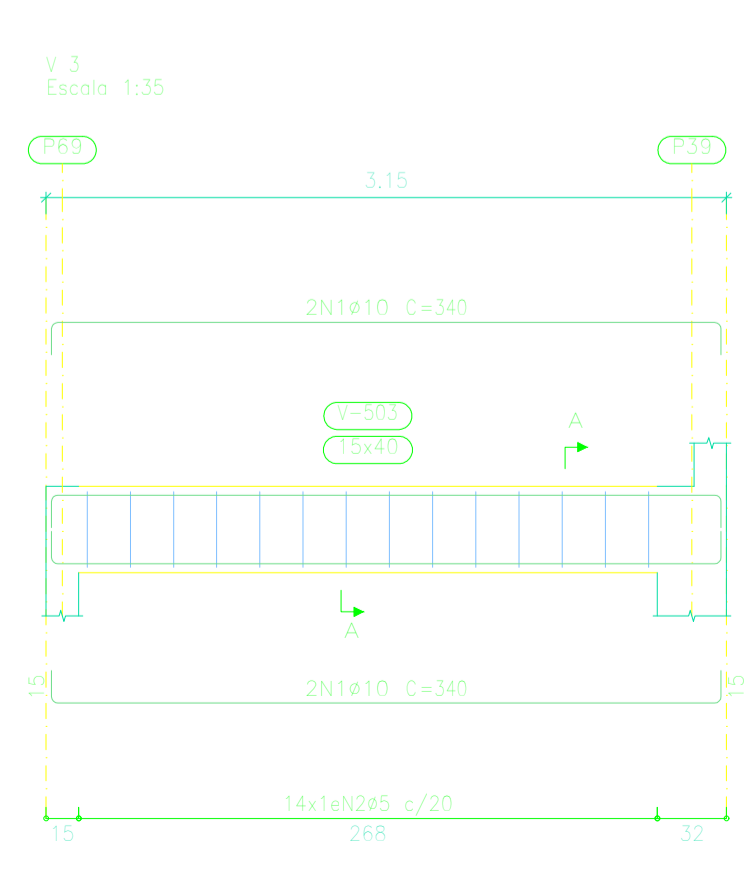
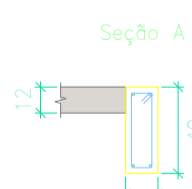
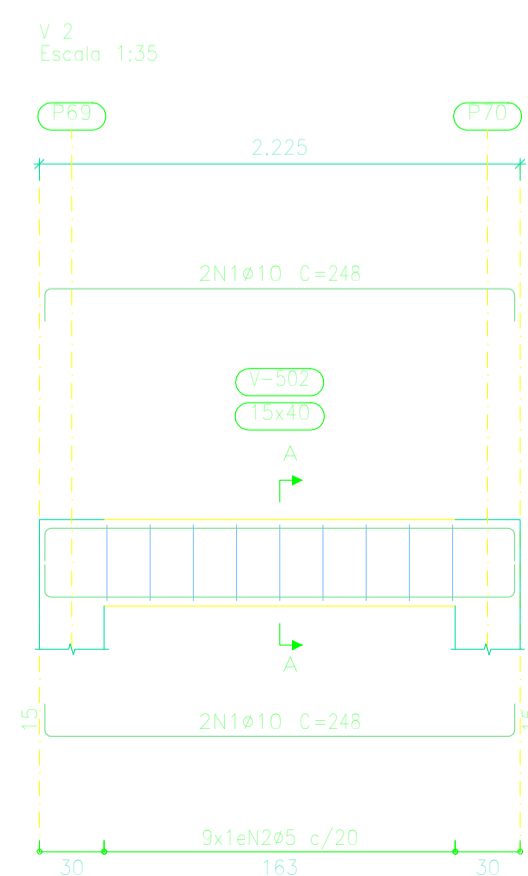
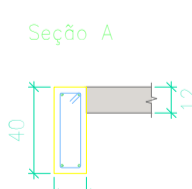
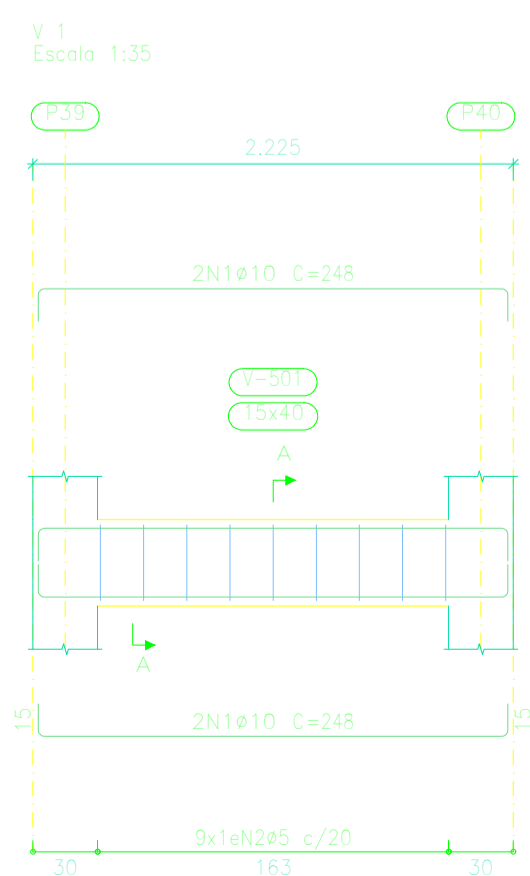


LEGENDA

- PILAR QUE NASCE
- PILAR QUE CONTINUA
- PILAR QUE MORRE
- ELEVÇÃO = 0 cm
- VIGA INVERTIDA

Elemento	Pos.	Diam.	O.	Esquema (cm)	Comp. (cm)	Tota (cm)	CA-50 (kg)	CA-60 (kg)	
V.1	1	ø10	4		248	992	6,1		
	2	ø5	9		98	882		1,4	
Total+10%							6,7	1,5	
V.2	1	ø10	4		248	992	6,1		
	2	ø5	9		98	882		1,4	
Total+10%							6,7	1,5	
V.3	1	ø10	4		340	1360	8,4		
	2	ø5	14		98	1372		2,2	
Total+10%							9,2	2,4	
V.4	1	ø10	2		196	392	2,4		
	2	ø10	2		190	380	2,3		
	3	ø5	7		98	686		1,1	
Total+10%							5,2	1,2	
V.5	1	ø10	2		179	358	2,2		
	2	ø10	2		173	346	2,1		
	3	ø5	6		98	588		0,9	
Total+10%							4,7	1,0	
							ø5:	0,0	7,8
							ø10:	32,5	0,0
							Total:	32,5	7,8

PATAMAR CENTRAL
 Desenho de vigas
 Concreto: C25, em geral
 Aço das barras: CA-50 e CA-60
 Aço dos estribos: CA-50 e CA-60



ASSUNTO:	PATAMAR CENTRAL	RESPONSÁVEL TÉCNICO:	
PROPRIETÁRIO:	EMETEL Valdomino Mendes Rodrigues		
MUNICÍPIO - UF:	NOVO PROGRESSO - PA	LOCAL:	Rua: Maria Valéria Stampel Bairro: Cristal Bar.
DESENHO:			Araldo Morbeck Júnior Engenheiro Civil CREA: 70450-00
ÁREA APLICAÇÃO:	FOLHA:	ESCALA:	DATA:
	09/23	Indicadas	Nov./2022