

PLANTA DE FORMA E DETALHES DAS FERRAGENS

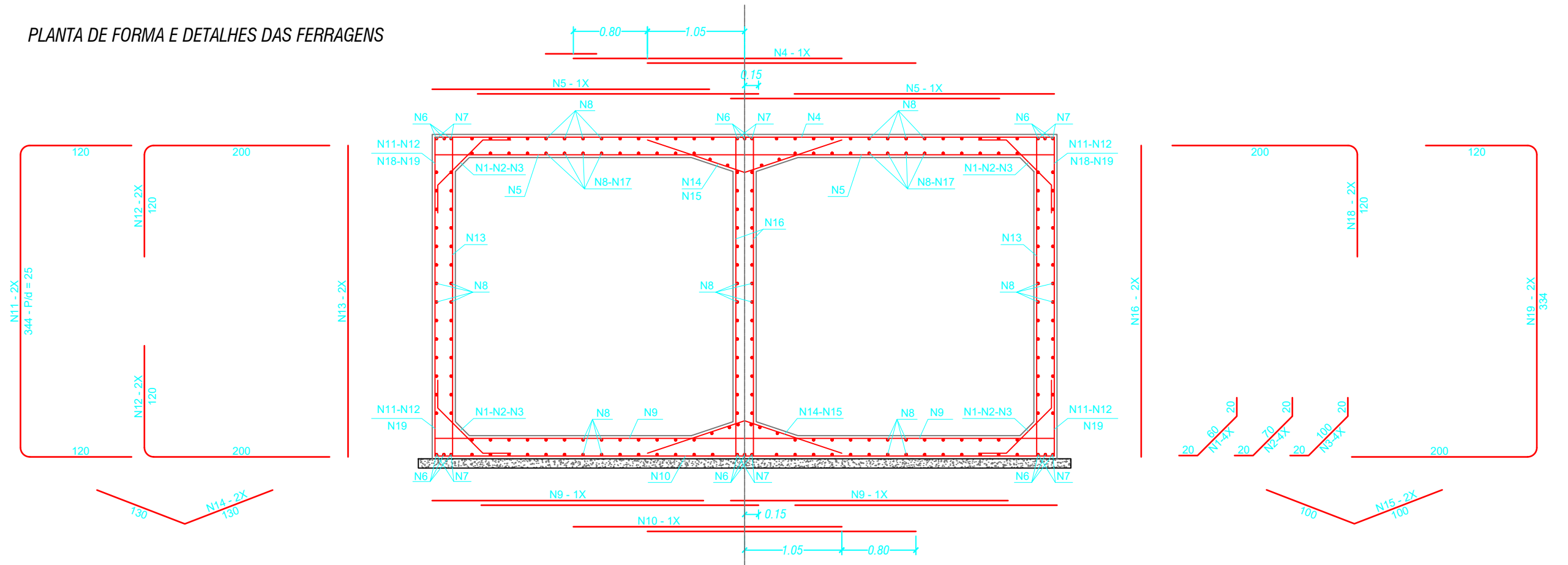


TABELA DAS ARMADURAS (POR METRO DE GALERIA)

0 ≤ h ≤ 100					100 ≤ h ≤ 250					250 ≤ h ≤ 500					500 ≤ h ≤ 750					750 ≤ h ≤ 1000					1000 ≤ h ≤ 1250					1250 ≤ h ≤ 1500				
fs > 0,21 MPa					fs > 0,21 MPa					fs > 0,23 MPa					fs > 0,28 MPa					fs > 0,32 MPa					fs > 0,36 MPa					fs > 0,42 MPa				
N°	Ø	Quant.	Comp.	Espaç.	N°	Ø	Quant.	Comp.	Espaç.	N°	Ø	Quant.	Comp.	Espaç.	N°	Ø	Quant.	Comp.	Espaç.	N°	Ø	Quant.	Comp.	Espaç.	N°	Ø	Quant.	Comp.	Espaç.	N°	Ø	Quant.	Comp.	Espaç.
1	6,3	20	100	c/20	1	6,3	20	100	c/20	1	6,3	20	110	c/20	1	6,3	20	110	c/20	1	6,3	20	110	c/20	1	6,3	20	110	c/20	1	6,3	20	110	c/20
2					2					2	6,3	20	110	c/20	2	6,3	20	110	c/20	2					2					2				
3					3					3					3	8,0	16	140	c/25	3	8,0	16	140	c/25	3	8,0	16	140	c/25	3	8,0	16	140	c/25
4	12,5	10	290	c/10	4	10,0	10	290	c/11	4	12,5	5	290	c/20	4	16,0	6	290	c/15	4	16,0	7	290	c/13	4	16,0	10	290	c/10	4	20,0	6	290	c/15
5	10,0	20	290	c/10	5	10,0	20	290	c/10	5	12,5	16	300	c/12	5	16,0	16	300	c/12	5	16,0	16	300	c/12	5	16,0	22	300	c/9	5	20,0	14	300	c/13
6					6					6	12,5	18	corr.		6	16,0	18	corr.		6	16,0	18	corr.	c/11	6	16,0	18	corr.		6	20,0	18	corr.	
7	12,5	12	corr.		7	12,5	12	corr.		7					7					7					7					7				
8	6,3	168	corr.	c/20	8	6,3	196	corr.	c/20	8	6,3	196	corr.	c/20	8	6,3	196	corr.	c/20	8	8,0	154	corr.	c/25	8	8,0	154	corr.	c/25	8	8,0	154	corr.	c/25
9	10,0	14	290	c/13	9	10,0	18	290	c/11	9	12,5	14	290	c/13	9	16,0	12	300	c/15	9	16,0	14	300	c/13	9	16,0	20	300	c/10	9	20,0	14	300	c/14
10	12,5	5	290	c/20	10	10,0	9	290	c/11	10	12,5	5	290	c/20	10	16,0	7	290	c/14	10	16,0	8	290	c/12	10	16,0	10	290	c/10	10	20,0	6	290	c/14
11					11	10,0	8	574	c/28	11	10,0	6	584	c/34	11	16,0	6	584	c/38	11	16,0	6	594	c/36	11	16,0	8	594	c/30	11	12,5	10	594	c/20
12					12	10,0	16	320	c/28	12	10,0	12	320	c/34	12	16,0	12	320	c/38	12	16,0	12	320	c/36	12	16,0	16	320	c/30	12	12,5	20	320	c/20
13	10,0	8	335	c/25	13	10,0	8	335	c/25	13	10,0	10	345	c/20	13	10,0	10	345	c/20	13	10,0	10	355	c/20	13	10,0	10	355	c/20	13	12,5	8	355	c/35
14					14					14					14	8,0	8	260	c/5	14	8,0	8	260	c/5	14	8,0	8	260	c/25	14	8,0	8	260	c/25
15	6,3	10	200	c/20	15	6,3	10	200	c/20	15	6,3	10	200	c/20	15	6,3	10	200	c/20	15					15					15				
16	10,0	8	335	c/30	16	10,0	8	335	c/25	16	10,0	8	345	c/25	16	10,0	10	345	c/20	16	10,0	10	355	c/20	16	10,0	10	355	c/20	16	12,5	8	355	c/30
17	10,0	32	corr.	c/18	17					17					17					17					17					17				
18	12,5	10	320	c/20	18					18					18					18					18					18				
19	12,5	10	654	c/20	19					19					19					19					19					19				
RESUMO					RESUMO					RESUMO					RESUMO					RESUMO					RESUMO									
Ø	kg/m	PESO (kg)			Ø	kg/m	PESO (kg)			Ø	kg/m	PESO (kg)			Ø	kg/m	PESO (kg)			Ø	kg/m	PESO (kg)			Ø	kg/m	PESO (kg)			Ø	kg/m	PESO (kg)		
6,3	0,245	50,960			6,3	0,245	57,820			6,3	0,245	58,310			6,3	0,245	58,310			8,0	0,395	77,894			8,0	0,395	77,894			8,0	0,395	77,894		
10,0	0,617	113,651			10,0	0,617	194,984			10,0	0,617	83,628			10,0	0,617	42,573			10,0	0,617	43,807			10,0	0,617	43,807			12,5	0,963	173,533		
12,5	0,963	147,243			12,5	0,963	11,556			12,5	0,963	130,583			16,0	1,578	336,335			16,0	1,578	355,902			16,0	1,578	474,536			20,0	2,466	337,349		
TOTAL		311,854			TOTAL		264,360			TOTAL		272,521			TOTAL		437,218			TOTAL		477,603			TOTAL		596,237			TOTAL		588,775		

NOTAS / OBSERVAÇÕES:

- (1) - CONCRETO f_{ck} ≥ 15 MPa
- (2) - LASTRO CONCRETO MAGRO
- (3) - REVESTIMENTO: ARGAMASSA DE CIMENTO E AREIA(1:3)
- (4) - FAZER JUNTA DE DILATAÇÃO A CADA 10.00m
- (5) - VEICULO CLASSE 45

NOMENCLATURA: h - ALTURA DO ATERRO SOBRE A GALERIA
fs - TENSÃO ADMISSÍVEL NO SOLO SOB A GALERIA

- (6) - APÓS A CONCRETAGEM DA SEGUNDA ETAPA, DEVERÃO SER RETIRADOS OS MADEIRITES DA JUNTA DE DILATAÇÃO

PROJETO DE OBRA DE ARTE CORRENTE		PE.DREN-BDCC-NPC.V02
LOCAL	: PROJETO GEOMÉTRICO ESTRUTURAL	
LOGRADOURO	: NOVO PROGRESSO-PA / AVENIDA JAMANXIM / AV. CRISTALINA	
EXTENSÃO	: VARIÁVEL	
RESP. TÉCNICO	: PREFEITURA MUNICIPAL DE NOVO PROGRESSO	
BDCC - 300 x 300 cm - ARMADURAS DO CORPO		DET DREN. - 02/08