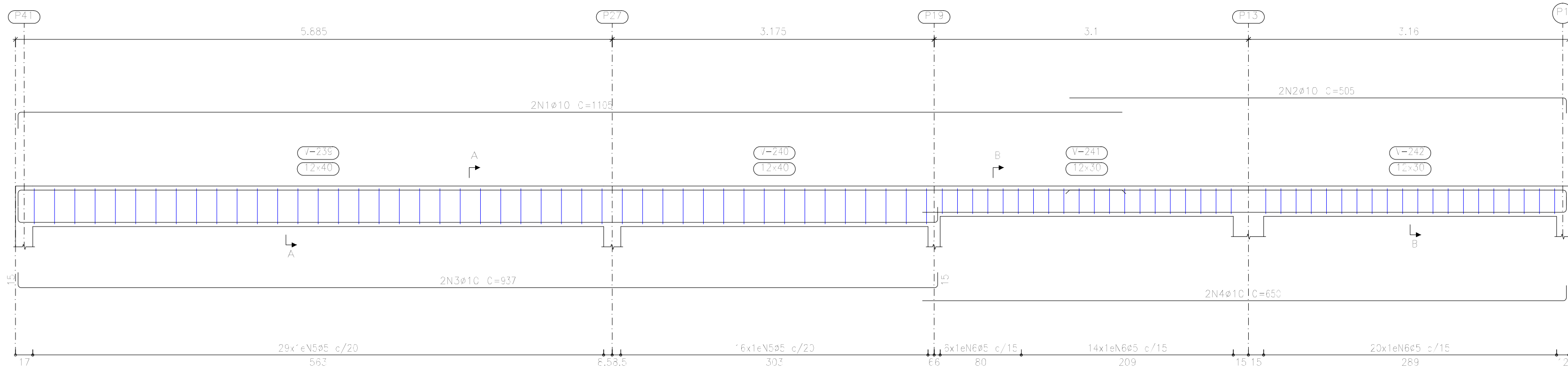
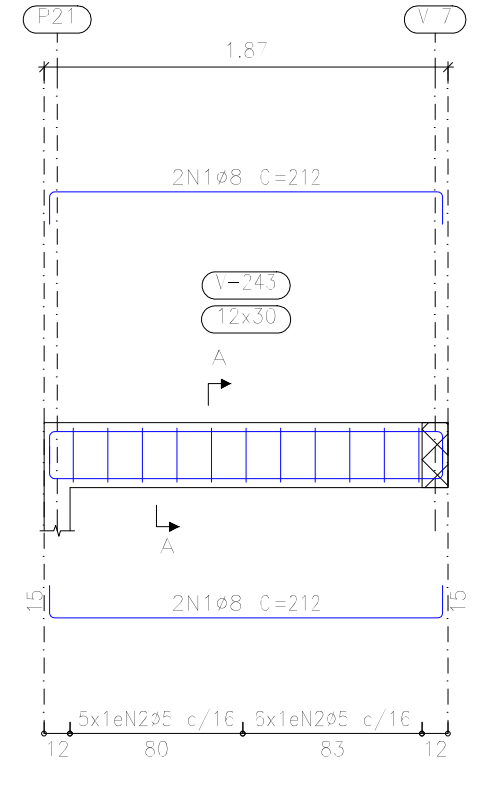


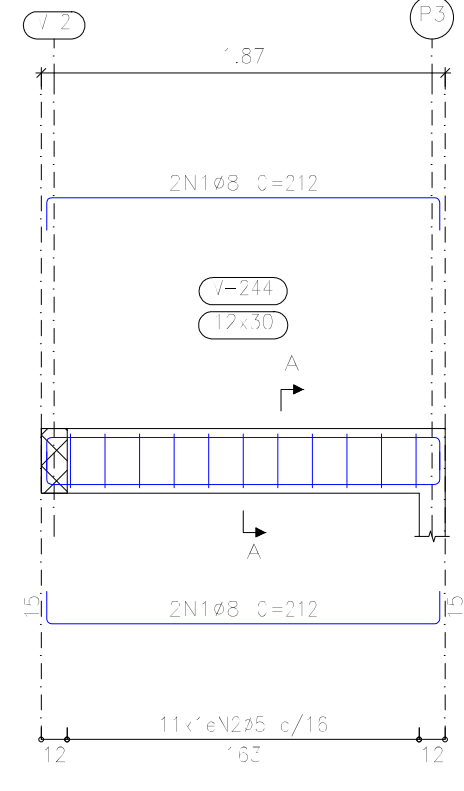
V 15
Escala 1:35



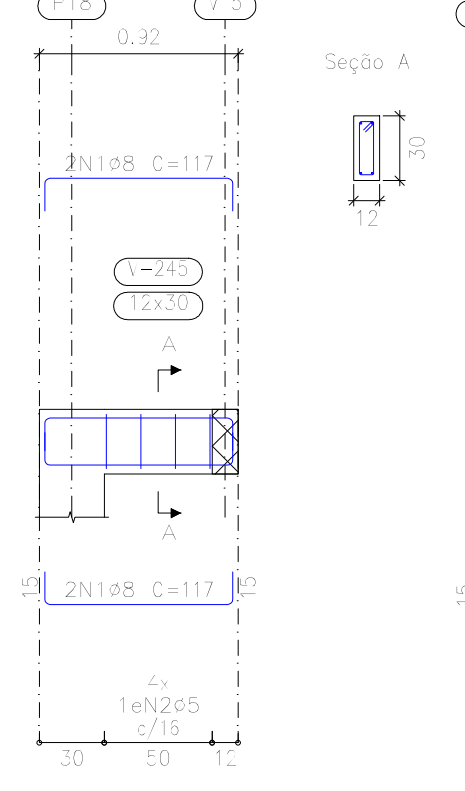
V 16
Escala 1:35



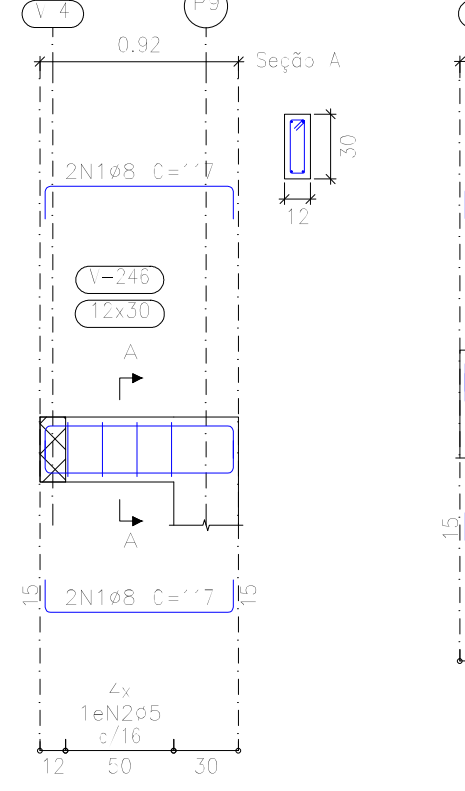
V 17
Escala 1:35



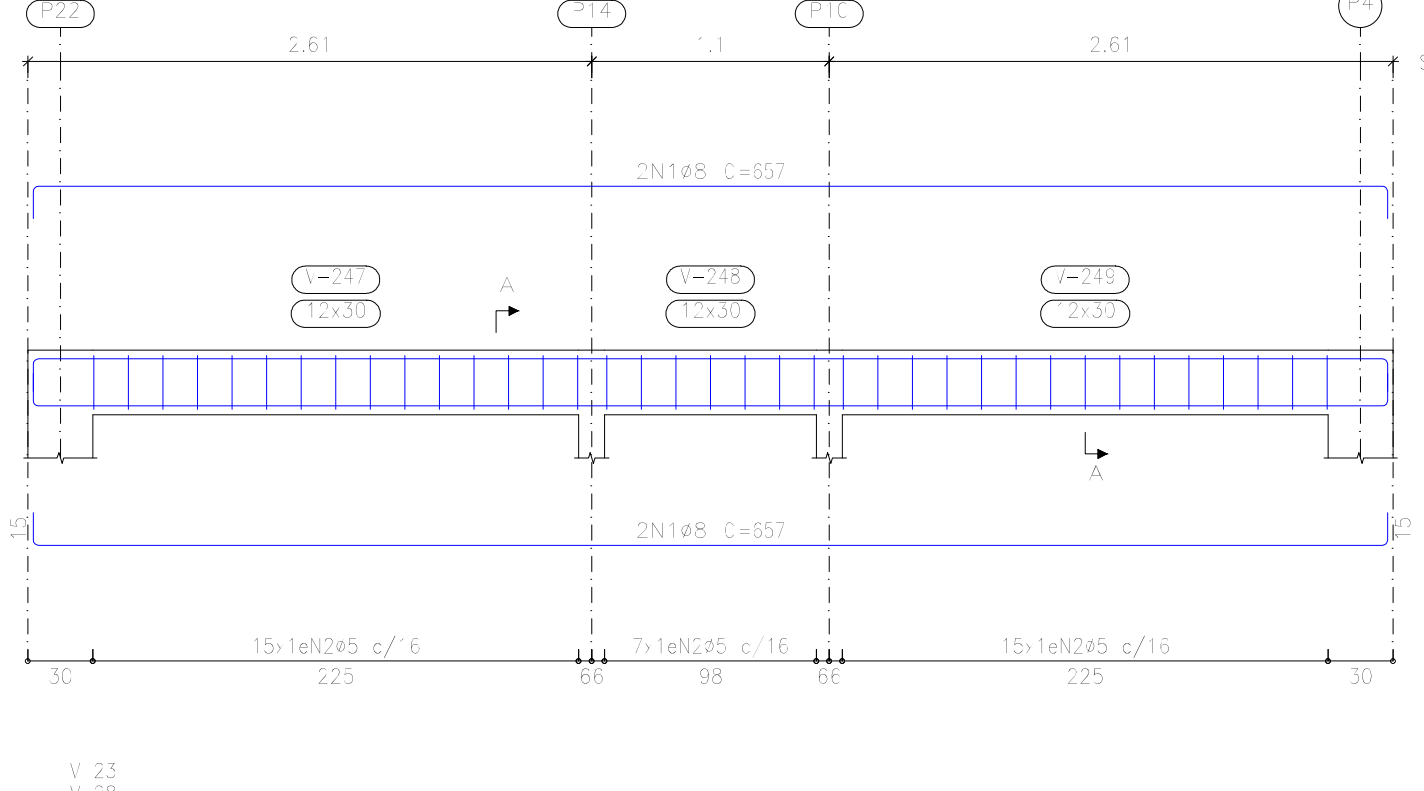
V 18
Escala 1:35



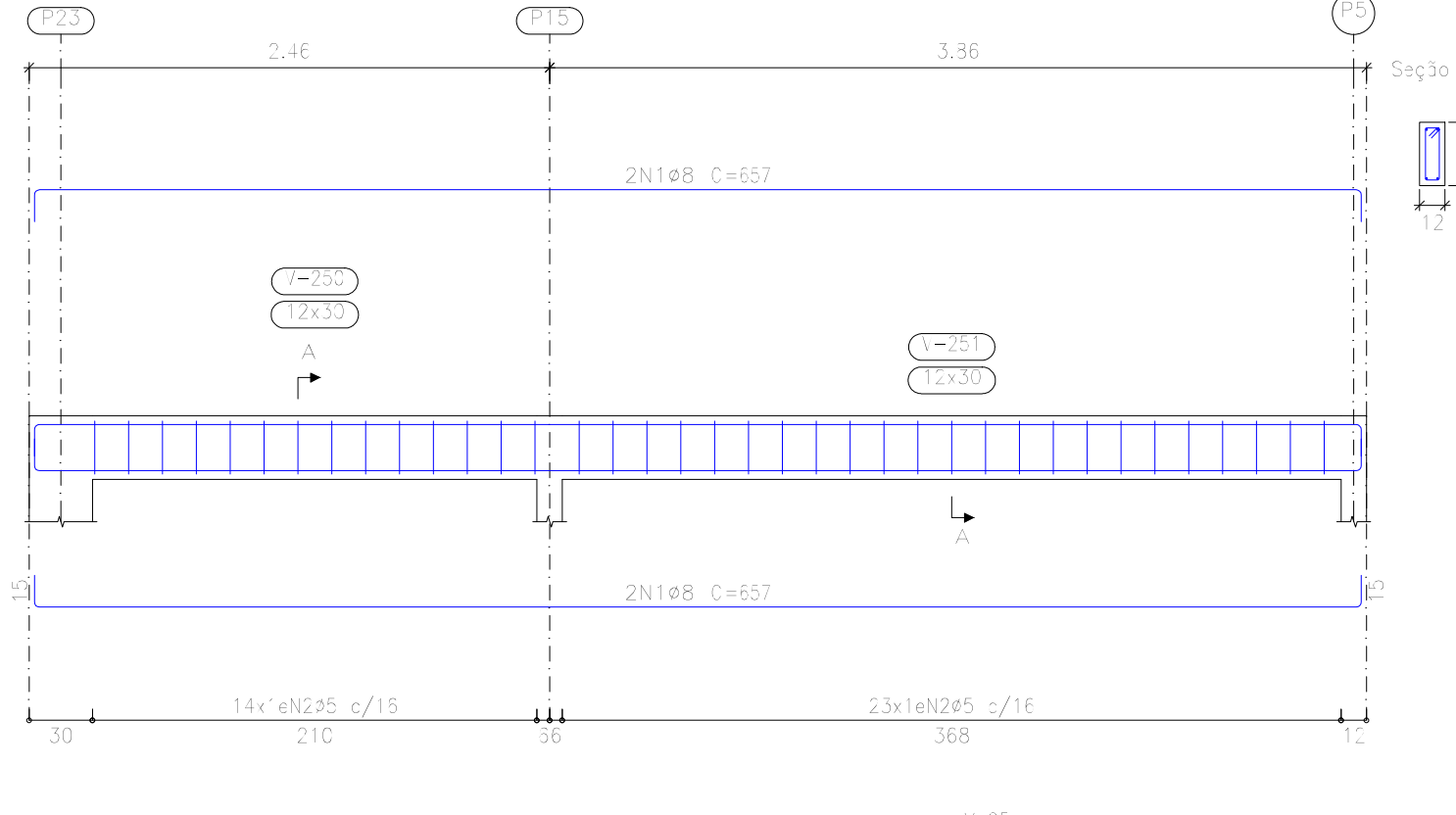
V 19
Escala 1:35



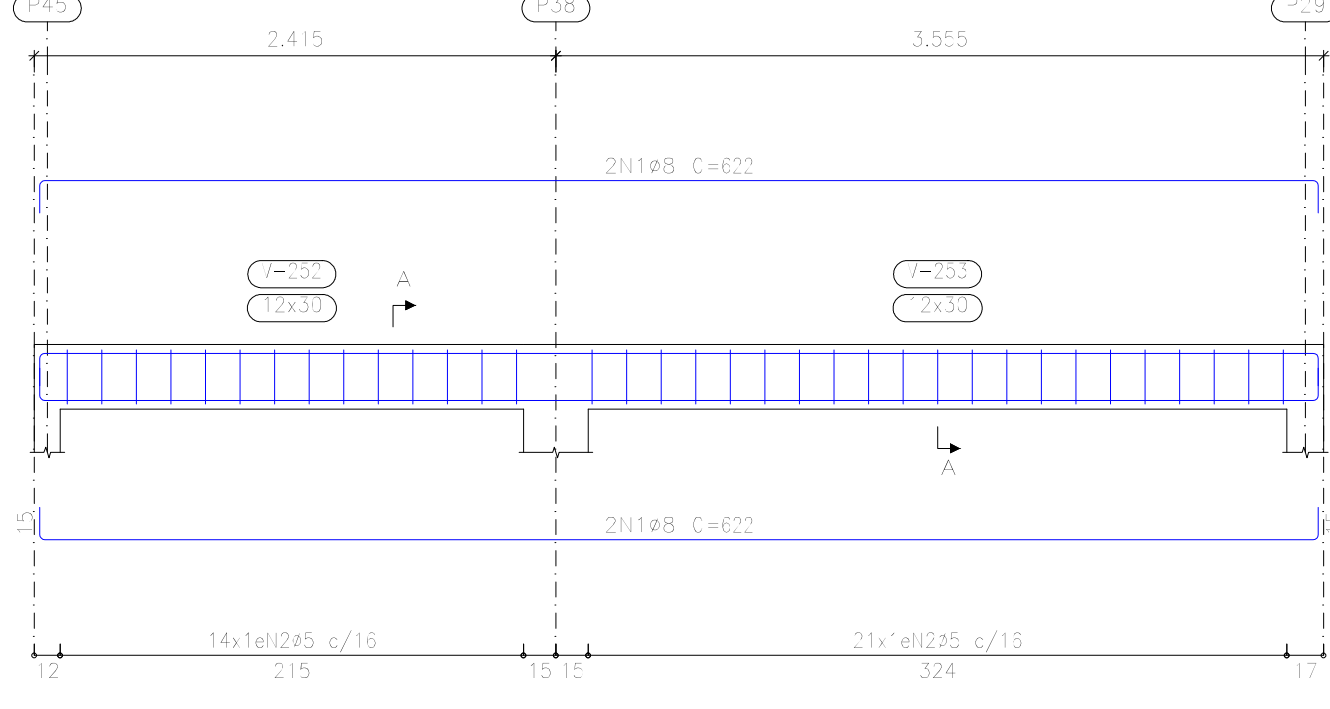
V 20
Escala 1:35



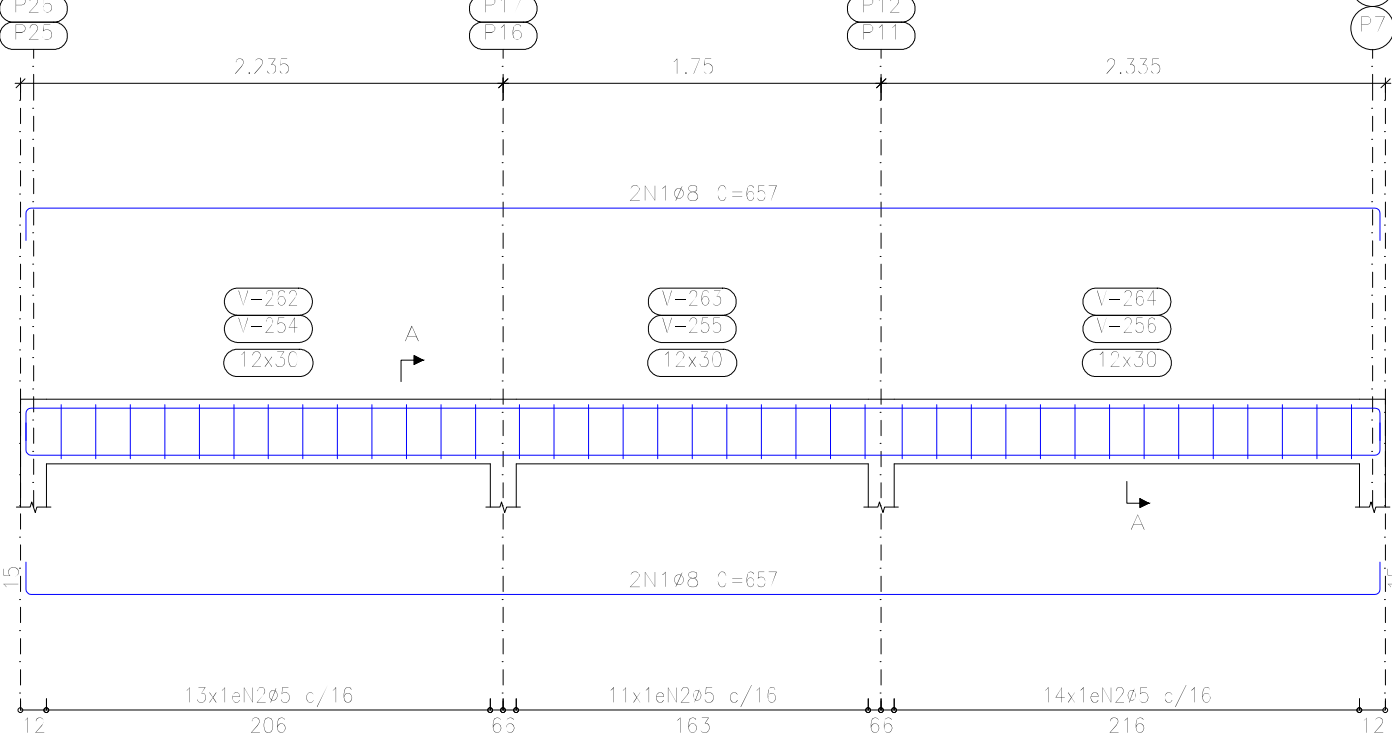
V 21
Escala 1:35



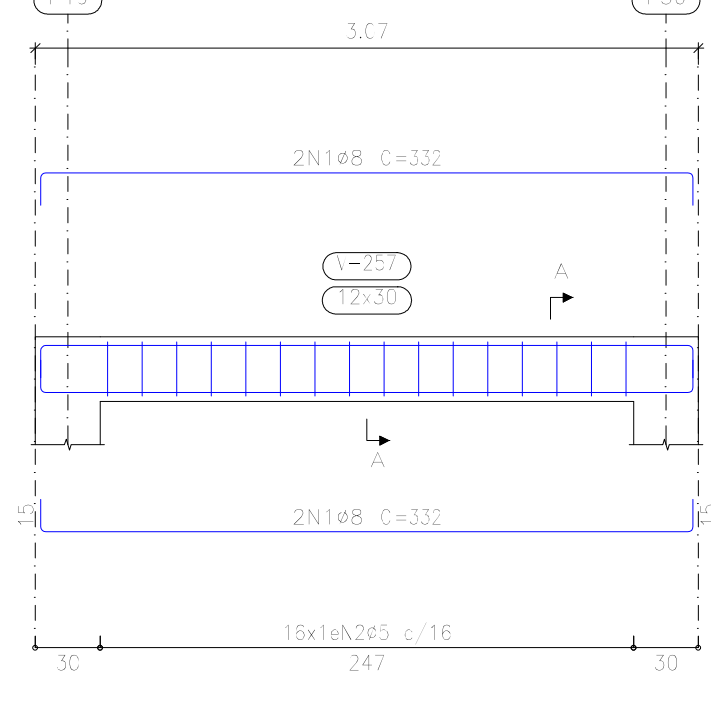
V 22
Escala 1:35



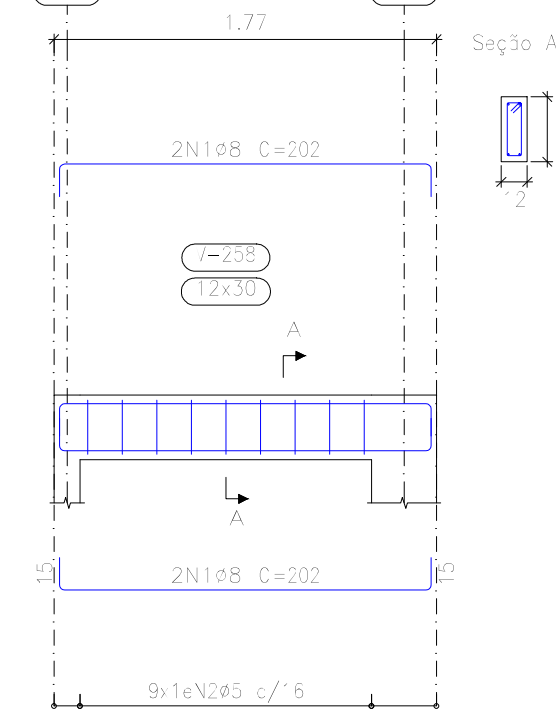
V 23
V 28
Escala 1:35



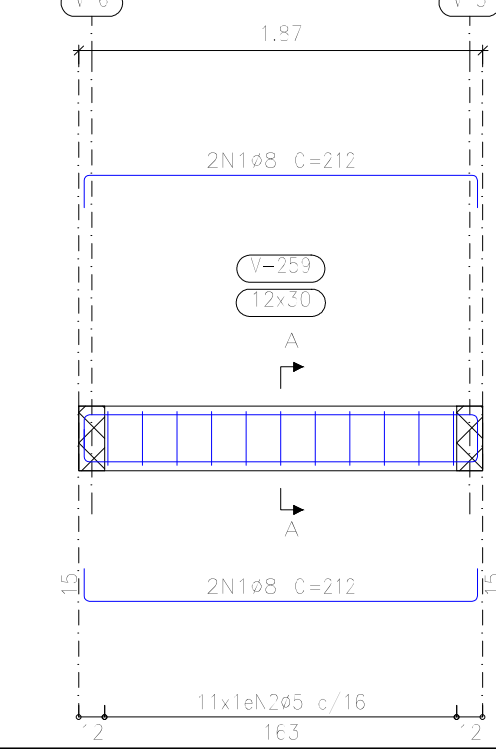
V 24
Escala 1:35



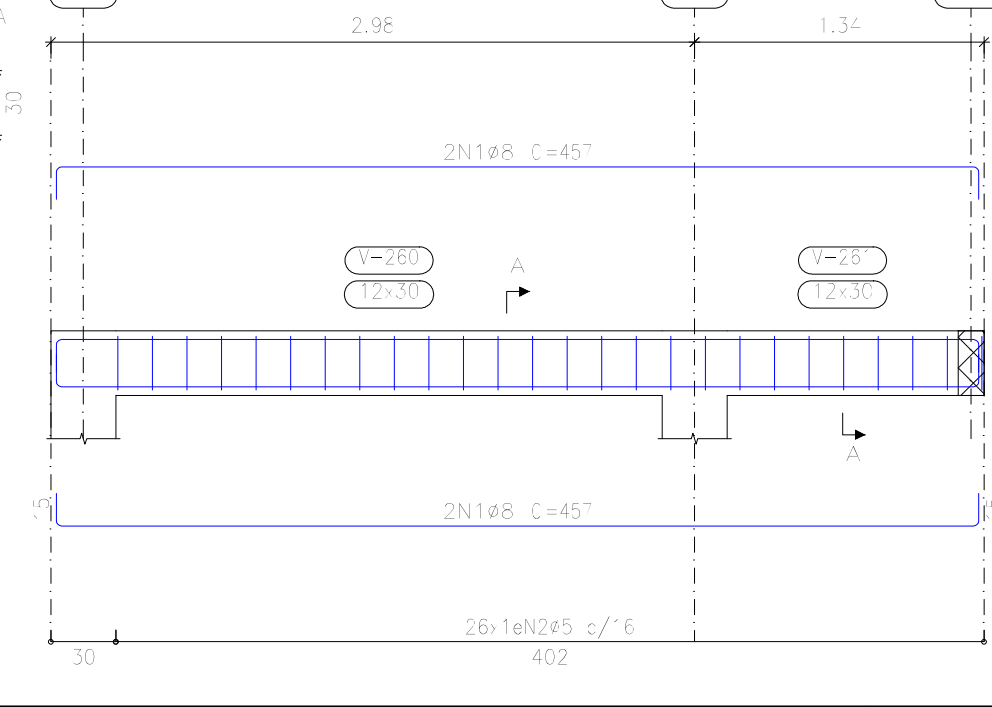
V 25
Escala 1:35



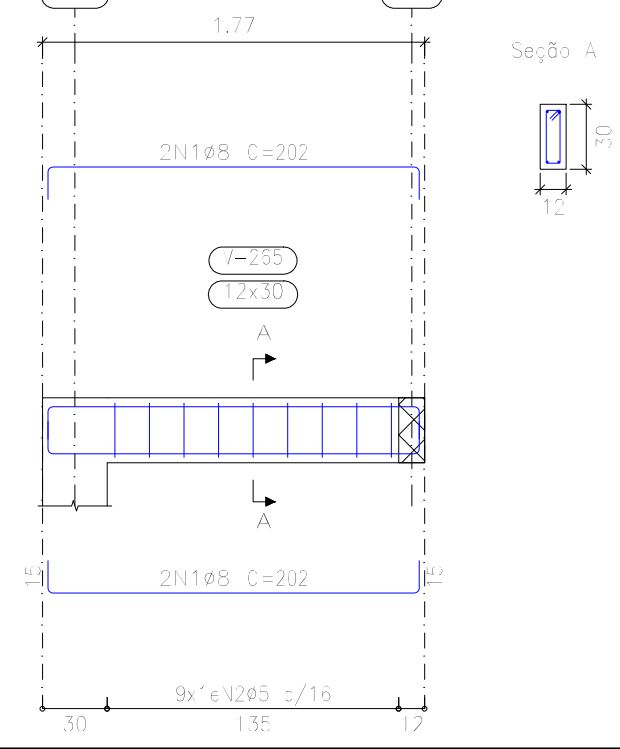
V 26
Escala 1:35



V 27
Escala 1:35



V 29
Escala 1:35




Elemento	Pos.	Diam.	Q.	Esquema (cm)	Comp. (cm)	Total (cm)	CA-50 (kg)	CA-60 (kg)	
V 15	1	ø10	2	[Diagram]	1105	2210	13.6		
	2	ø10	2	[Diagram]	505	1010	6.2		
	3	ø10	2	[Diagram]	537	1074	11.5		
	4	ø10	2	[Diagram]	650	1300	8.0		
	5	ø5	45	[Diagram]	92	4140		6.5	
	6	ø5	45	[Diagram]	72	2880		4.5	
Total+ 0%							43.2	12.1	
V 16	1	ø8	4	[Diagram]	212	848	3.3		
	2	ø5	11	[Diagram]	72	792		1.2	
Total+ 0%							3.6	1.3	
V 17	1	ø8	4	[Diagram]	212	848	3.3		
	2	ø5	11	[Diagram]	72	792		1.2	
Total+ 0%							3.6	1.3	
V 18	1	ø8	4	[Diagram]	117	468	1.8		
	2	ø5	4	[Diagram]	72	288		0.5	
Total+ 0%							2.0	0.6	
V 19	1	ø8	4	[Diagram]	117	468	1.8		
	2	ø5	4	[Diagram]	72	288		0.5	
Total+ 0%							2.0	0.6	
V 20	1	ø8	4	[Diagram]	657	2628	10.4		
	2	ø5	37	[Diagram]	72	2664		4.2	
Total+ 0%							11.4	4.6	
V 21	1	ø8	4	[Diagram]	657	2628	10.4		
	2	ø5	37	[Diagram]	72	2664		4.2	
Total+ 0%							11.4	4.6	
V 22	1	ø8	4	[Diagram]	657	2628	10.4		
	2	ø5	35	[Diagram]	72	2520		4.0	
Total+ 0%							10.8	4.4	
V 23-V 28	1	ø8	4	[Diagram]	657	2628	10.4		
	2	ø5	35	[Diagram]	72	2736		4.3	
Total+ 0%							11.4	4.7	
V 24	1	ø8	4	[Diagram]	332	1328	5.2		
	2	ø5	15	[Diagram]	72	1152		1.8	
Total+ 0%							5.7	2.0	
V 25	1	ø8	4	[Diagram]	202	808	3.2		
	2	ø5	9	[Diagram]	72	648		1.0	
Total+ 0%							3.5	1.1	
V 26	1	ø8	4	[Diagram]	212	848	3.3		
	2	ø5	11	[Diagram]	72	792		1.2	
Total+ 0%							3.6	1.3	
V 27	1	ø8	4	[Diagram]	457	1828	7.2		
	2	ø5	29	[Diagram]	72	1872		2.9	
Total+ 0%							7.9	3.2	
V 29	1	ø8	4	[Diagram]	202	808	3.2		
	2	ø5	9	[Diagram]	72	648		1.0	
Total+ 0%							3.5	1.1	
							ø5:	0.0	47.6
							ø8:	91.8	0.0
							ø10:	43.2	0.0
							Total:	135.0	47.6

RESPALDO
 Desenho de vigas
 Concreto: C20, em geral
 Aço das barras: CA-50 e CA-60
 Aço dos estribos: CA-50 e CA-60
 Escala vigas 1:35
 Escala seções 1:35
 Escala aberturas 1:35

Resumo Aço	Comp. total (m)	Peso+10% (kg)	Total
CA-50 ø8	616.1	268	
ø10	158.3	107	375
CA-60 ø5	778.8	134	134
Total			509

PROJETO ESTRUTURAL

	ASSUNTO: VIGAS DE RESPALDO PARTE 03	RESPONSÁVEL TÉCNICO:
	PROPRIETÁRIO: PREFEITURA MUNICIPAL DE NOVO PROGRESSO MUNICÍPIO - UF: Novo Progresso - PA LOCAL: Rua: Av. 24 Junho, nº 414, Q.930, Lote 01, Bairro: Distrito de Santa Rita	Amaldo Morbeck Júnior Engenheiro Civil CRB-17430-00
ÁREA APLICAÇÃO:	FUQU: 10/12	ESCALA: Indicadas
		DATA: SET/2021