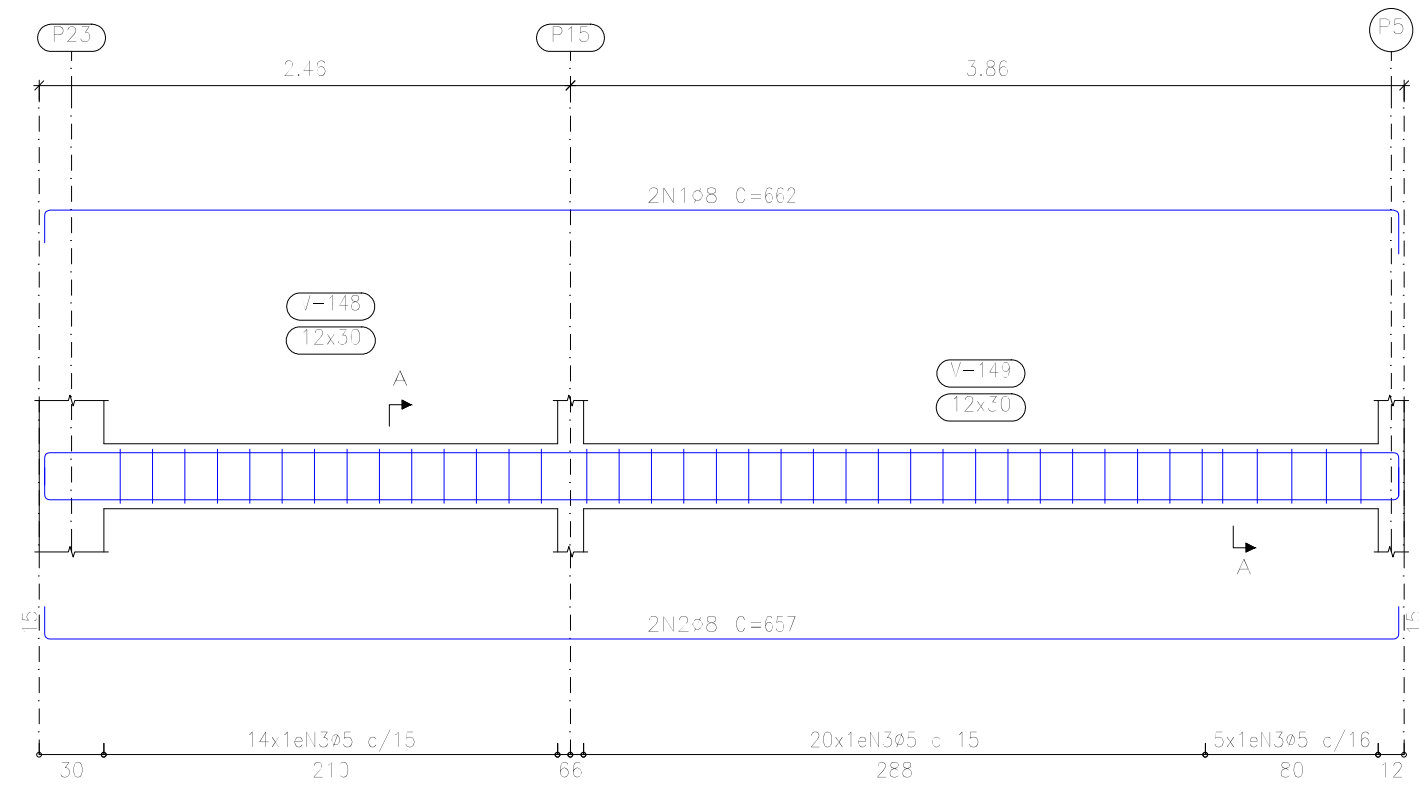
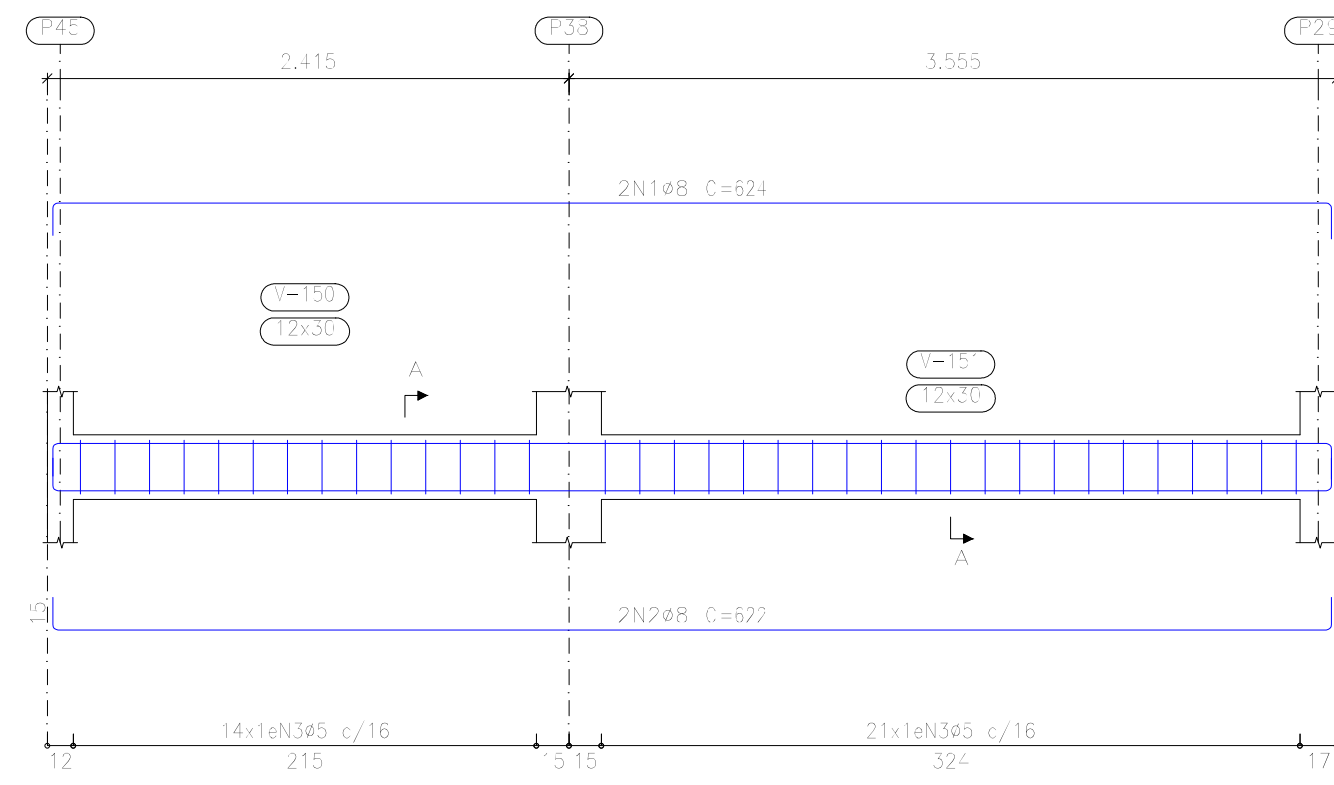


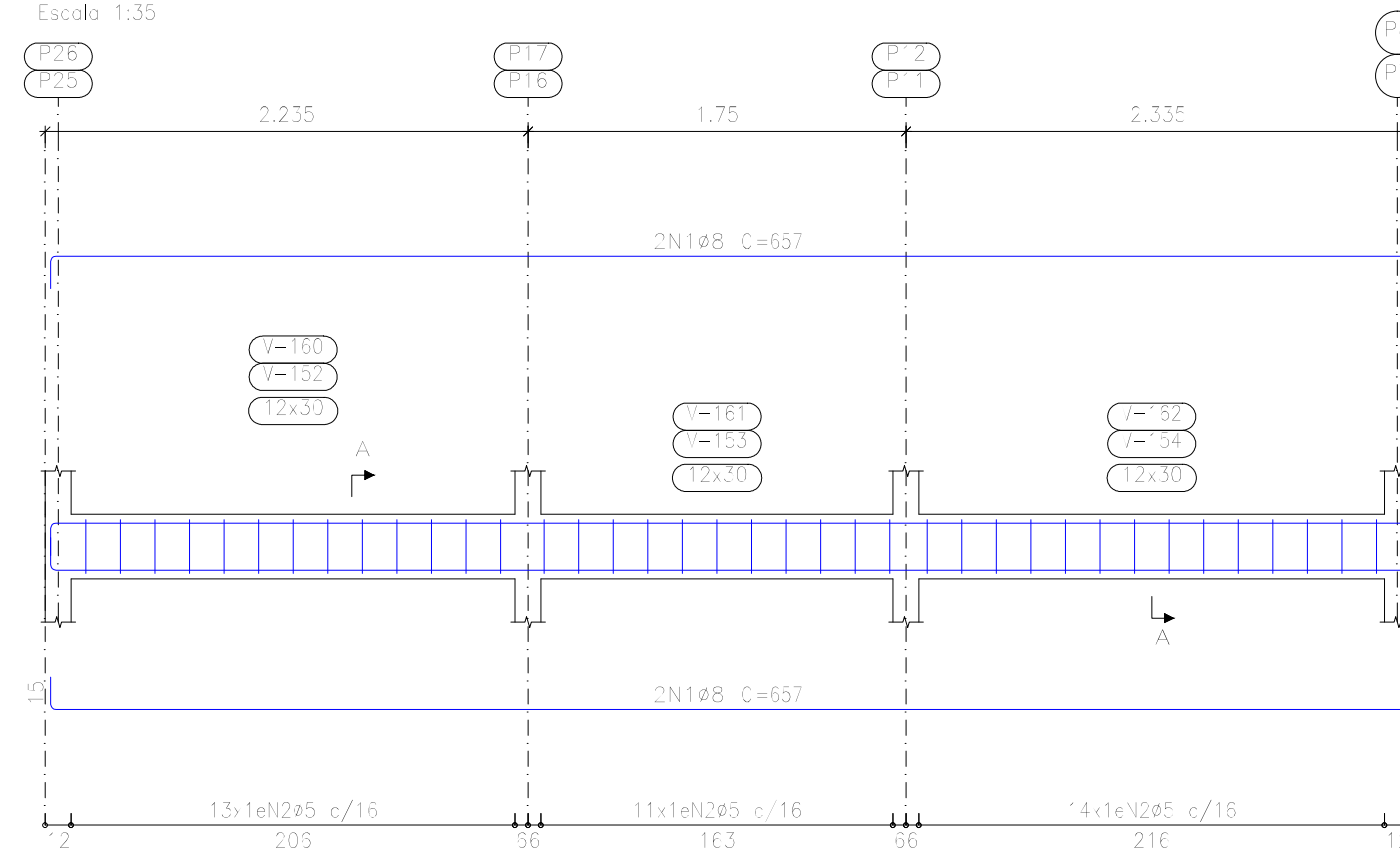
V 21
Escala 1:35



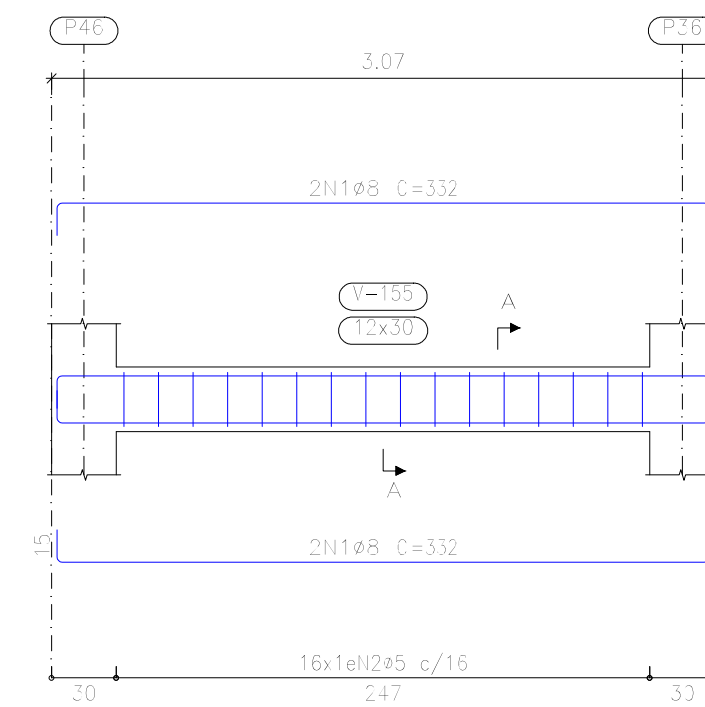
V 22
Escala 1:35



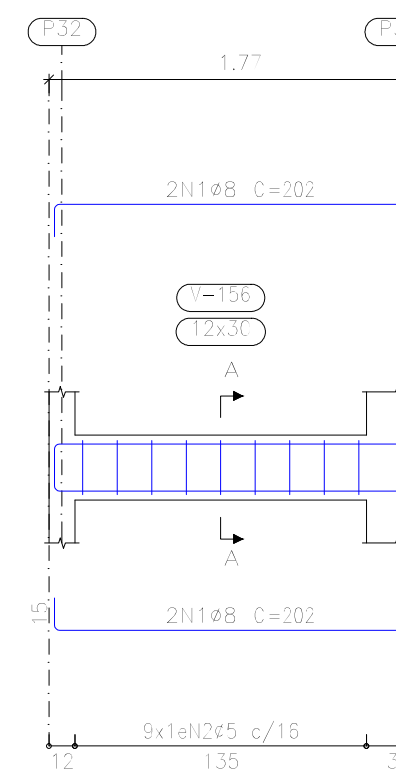
V 23
V 28
Escala 1:35



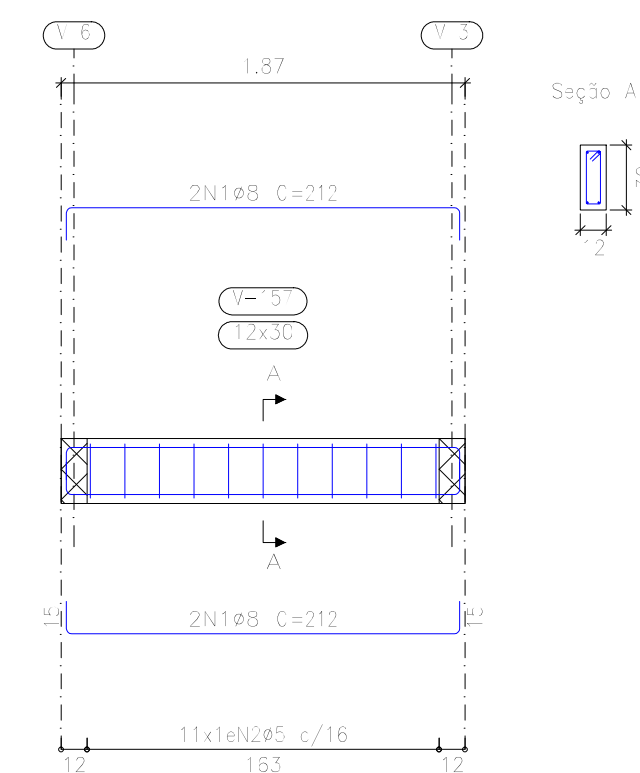
V 24
Escala 1:35



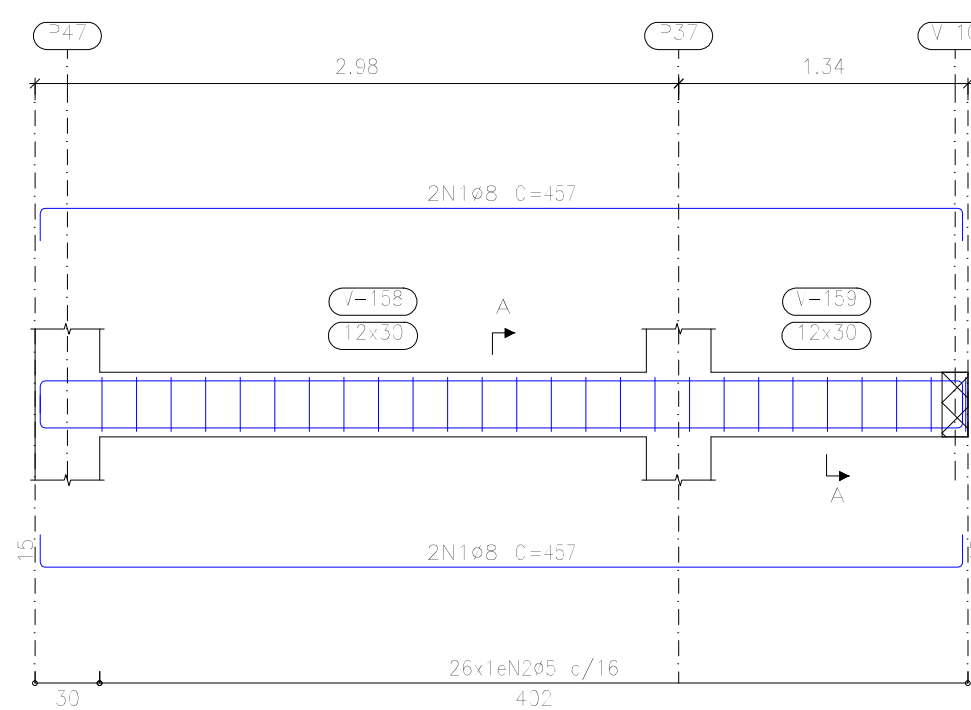
V 25
Escala 1:35



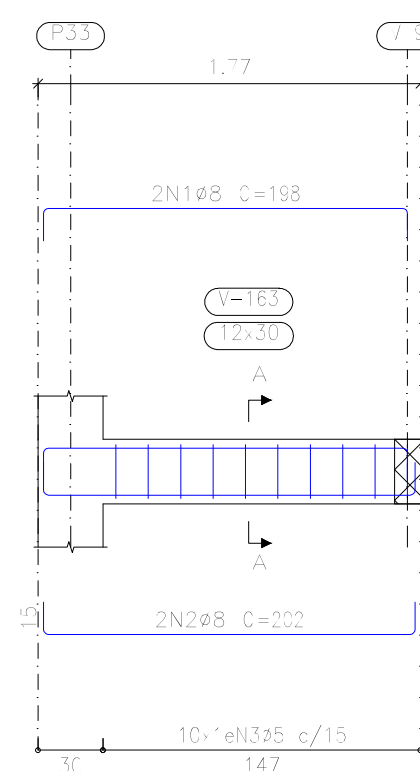
V 26
Escala 1:35



V 27
Escala 1:35



V 29
Escala 1:35



Elemento	Pos.	Diam.	Q.	Esquema (cm)	Comp. (cm)	Total (cm)	CA-50 (kg)	CA-60 (kg)	
V 21	1	ø8	2		632	1324	5.2		
	2	ø8	2		657	1314	5.2		
	3	ø5	39		72	2808		4.4	
Total+10%							11.4	4.8	
V 22	1	ø8	2		624	1248	4.9		
	2	ø8	2		627	1244	4.9		
	3	ø5	35		72	2520		4.0	
Total+10%							10.8	4.4	
V 23=V 28	1	ø8	4		657	2628	10.4		
	2	ø5	38		72	2736		4.3	
	Total+10%							11.4	4.7
V 24	1	ø8	4		332	1328	5.2		
	2	ø5	16		72	1152		1.8	
	Total+10%							5.7	2.0
V 25	1	ø8	4		202	808	3.2		
	2	ø5	9		72	648		1.0	
	Total+10%							3.5	1.1
V 26	1	ø8	4		212	848	3.3		
	2	ø5	11		72	792		1.2	
	Total+10%							3.6	1.3
V 27	1	ø8	4		457	1828	7.2		
	2	ø5	26		72	1872		2.3	
	Total+10%							7.9	3.2
V 29	1	ø8	2		198	396	1.6		
	2	ø8	2		202	404	1.6		
	3	ø5	10		72	720		1.1	
Total+10%							3.5	1.2	
							ø5:	0.0	27.4
							ø8:	69.2	0.0
							Total:	69.2	27.4

Resumo Aço	Comp. total (m)	Peso+10% (kg)	Total
Desenho de vigas			
CA-50 ø8	715.0	311	311
CA-60 ø5	722.2	125	125
Total			436

BALDRAME
 Desenho de vigas
 Concreto: C20, em geral
 Aço dos barras: CA-50 e CA-60
 Aço dos estribos: CA-50 e CA-60
 Escala vigas 1:35
 Escala seções 1:35
 Escala aberturas 1:35

PROJETO ESTRUTURAL			
	ASSUNTO:	VIGAS BALDRAME PARTE 02	RESPONSÁVEL TÉCNICO:
	PROPRIETÁRIO:	PREFEITURA MUNICIPAL DE NOVO PROGRESSO	Arnaldo Morbeck Júnior Engenheiro Civil CREA - 70430-GO
	MUNICÍPIO - UF:	Novo Progresso - PA	
DESENHO:	LOCAL: End.: Av. Zé Bento, nº s/n, Q.920, Lote 01 Bairro: Distrito de Santa Júlia	ÁREA AMPLIAÇÃO:	DATA: SET/2021
	FOLHA: 06/12	ESCALA: Indicadas	